

HYDROGRAPHIC SURVEY

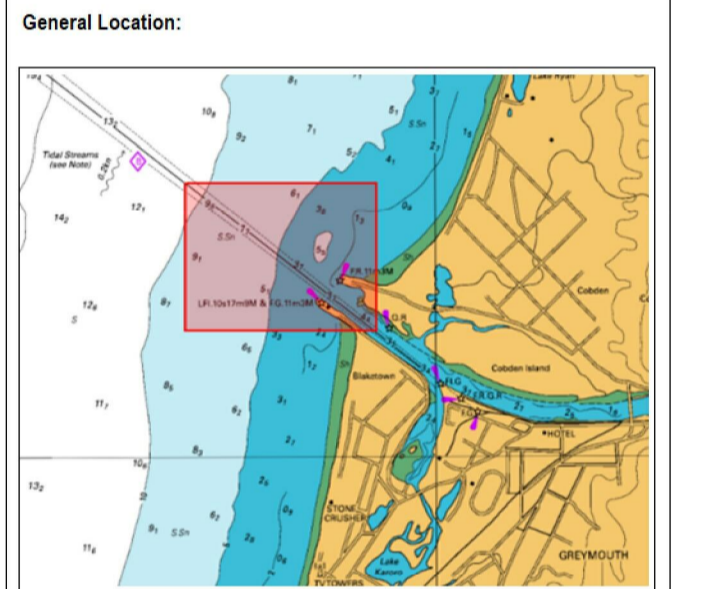
Monitoring Hydrographic Survey

Surveyed For:

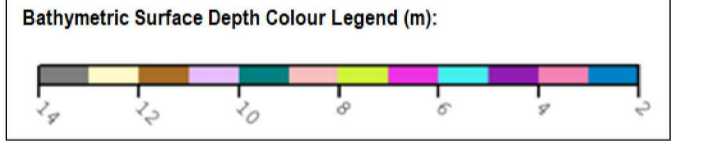
Surveyed By:

Title: BATHYMETRIC PLOT - Grey River Entrance Sheet CH1
Location: Port of Greymouth
Scale: 1:2000
Datum: NZGD2000
Projection: GREYTM2000
Depths in: Metres and decimetres below CD
Chart Datum: is 5.032m below BM 3 (LINZ code AE40)
Survey Date: 27-Jun-24
SHL Project No: GDC_IN2412
Survey Vessel: SMB PANDORA II
Equipment: Reson T20-R 400kHz MBES
 Applanix POSMV
 Trimble NetR9 RTK GNSS
 QINSY Data Acquisition v9.0
Data Processing: MBES Data - CARIS HIPS v12
 Surface Combination - CARIS Base Editor v5.5
 Volumes - CARIS EAM v6

Survey Uncertainty: Uncertainty at 95% confidence Level
 Total Vertical Uncertainty: 0.18m at maximum depth of 20m
 Total Horizontal Uncertainty: 0.18m at maximum depth of 20m
Survey Report Reference: GDC_IN2412_ROS_v1
Class of Survey: Achieves LINZ Special Order



Bathymetric Depth Surface:
Source: GDC_IN2412_Comb_C10cm_v1
Surface Parameters: CUBE
 Grid size = 10cm
Display Parameters: Vertical exaggeration = x5
 Sun Illumination - Azimuth 45°
 Sun Illumination - Elevation 45°
Depth Contours: 1.0m intervals



Notes:
 1. Background aerial imagery sourced from LINZ Data Service. Flown 2015, 0.3m resolution.

Sheet No.	GDC-IN2412_Sheet-CH1_A1-2K-STD_v1		
Version:	1.0	Date:	7/07/2024
Drawn By:	DLM	Checked By:	DLM
Approved:	D.L. MUNDY MNZM AHSCP Level 1 / IHO Cat A		