

HYDROGRAPHIC SURVEY

Monitoring Hydrographic Survey

Surveyed For:

Surveyed By:

Title: BATHYMETRIC PLOT - Grey River Entrance Sheet CH1

Location: Port of Greymouth

Scale: 1:2000

Datum: NZGD2000

Projection: GREYTM2000

Depths in: Metres and decimetres below CD

Chart Datum: is 5.032m below BM 3 (LINZ code AE40)

Survey Date: 18-Dec-24

SHL Project No: GDC_IN2422

Survey Vessel: SMB PANDORA II

Equipment: Reson T20-R 400kHz MBES
Applanix POSMV
Trimble NetR RTK GNSS
QINSy Data Acquisition v9.0

Data Processing: MBES Data - CARIS HPS v12
Surface Combination - CARIS Base Editor v5.5
Volumes - CARIS EAM v6

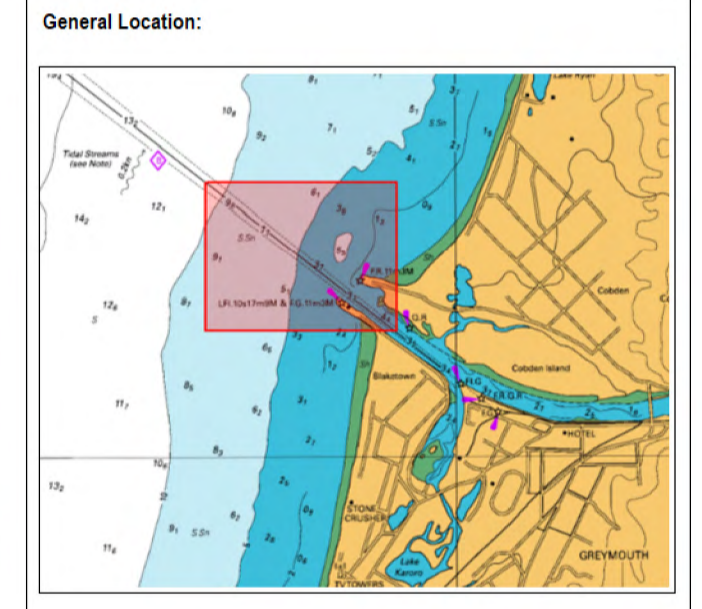
Survey Uncertainty: Uncertainty at 95% confidence Level

Total Vertical Uncertainty: 0.18m at maximum depth of 20m

Total Horizontal Uncertainty: 0.18m at maximum depth of 20m

Survey Report Reference: GDC_IN2422_ROS_v1

Class of Survey: Achieves LINZ Special Order



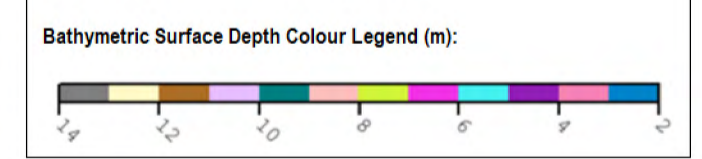
Bathymetric Depth Surface:

Source: GDC_IN2422_Comb_C10cm_v1

Surface Parameters: CUBE
Grid size = 10cm

Display Parameters: Vertical exaggeration = x5
Sun Illumination - Azimuth 45°
Sun Illumination - Elevation 45°

Depth Contours: 1.0m intervals



Notes:

1. Background aerial imagery sourced from LINZ Data Service. Flown 2015, 0.3m resolution.

Sheet No.	GDC-IN2422_Sheet-CH1_A1-2K-STD_v1		
Version:	1.0	Date:	15/01/2025
Drawn By:	DLM	Checked By:	DLM
Approved:	D.L. MUNDY MNZM AHSCP Level 1 / IHO Cat A		